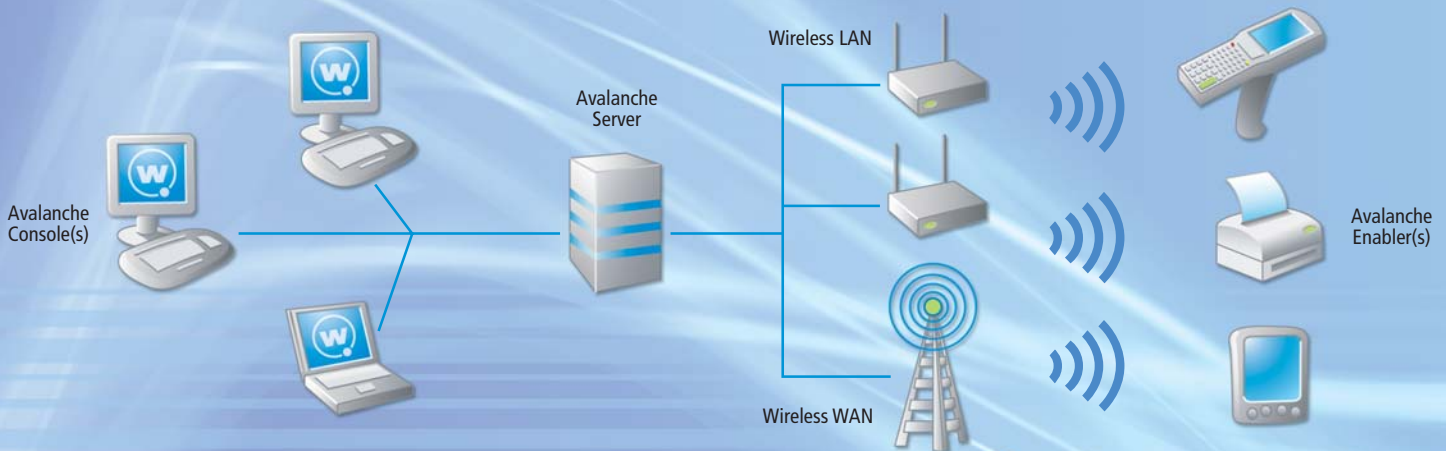


Relieve the Burden of Mobile Device Management

Wireless mobile devices evoke two distinct responses. Users wonder how they ever lived without wireless mobility. You wonder how to live with mobility—because the management challenges grow exponentially as usage increases. Master the challenges with Wavelink Avalanche™, proven software for centralized management of mobile devices.

Avalanche performs rapid, hands-off updates of wireless devices located anywhere in the enterprise. Remotely and seamlessly, it revises configurations, synchronizes software and updates firmware and drivers. Best of all, it cuts your costs—in time, money and morale—by reducing the burden on your IT resources and eliminating labor-intensive management of mobile equipment.



Manage Local and Remote Devices

With Avalanche, you can manage onsite devices through a wireless LAN and support remote sites over any WAN connection. The single, central console lets you check and deploy the right settings for a host of popular devices and operating systems: Symbol, Fujitsu, Intermec, PSC, LXE, HHP, DENSO, HP/Compaq and Zebra Printers; Windows, Windows CE, Pocket PC, Palm and even legacy DOS. Once you've defined device-specific profiles for firmware, utilities, drivers, software and so on, Avalanche automatically handles the repetitive process of updating each unit.

Enhance and Extend Wireless Security

Avalanche increases the security of your wireless network by enabling quick, easy updates to parameters such as SSID, WEP, EAP, LEAP and 802.1X settings—without adding new devices or infrastructure. When you use Avalanche in conjunction with Wavelink Mobile Manager for wireless network management, capabilities such as automatic rotation of WEP keys and detection of rogue APs protect your network from malicious intrusions and unauthorized equipment.

Track Your Mobile Assets

Avalanche provides real-time visibility into the status of all mobile devices under management. You can check to see which devices are up-to-date or not, or when the last time a device connected into the network. Avalanche also helps you keep track of all managed assets and even lets you export asset lists and properties to reporting applications.

Maximize Uptime and Productivity

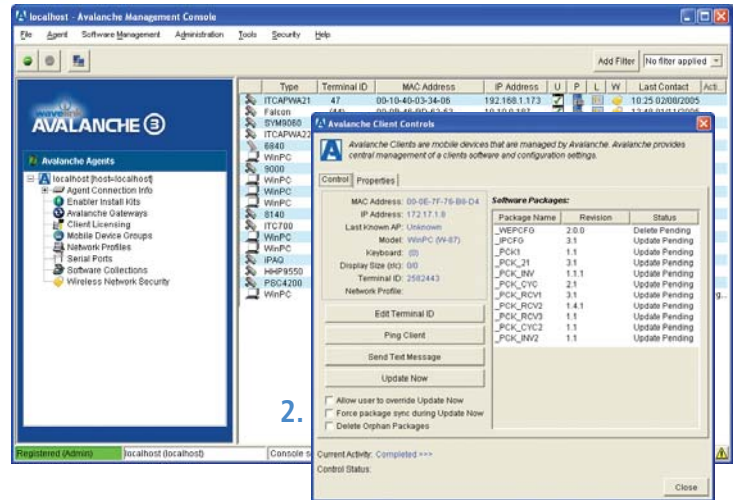
When it's time for updates, upgrades and other maintenance activities, Avalanche keeps mobile devices in the field where they belong. It automatically downloads new information directly to each device via the wireless network (LAN or WAN)—cradles, docking stations, IrDA or serial connections can also be used for updating devices but are not required. Avalanche also minimizes downtime when a mobile device fails and you need to quickly configure and deploy a replacement, locally or at a remote site.

AVALANCHE



Avalanche provides a clear and complete view of the state of your mobile device assets. At a glance you can see all the devices under management and the last time they have been updated.

1. Access and create your software collections and network profiles from the easy-to-use tree view.
2. Get detailed information on any device, such as installed software packages, status and device parameters. Contact or "ping" a device and even send a text message to a device user.



Key Features

Centralized Management - Manage all aspects of mobile devices from a single console. Administer all functions, such as software distribution and configuring network and device parameters from Avalanche's intuitive user interface. When used with Wavelink Terminal Emulators, you can view device-specific session logs, configure connection persistence parameters via the Wavelink TermProxy Server, monitor specific emulation sessions, and even take control of problem sessions as a troubleshooting/help desk function.

Flexible Software Distribution - Avalanche provides fine-grained control to create and distribute software to targeted mobile devices. Software can be easily distributed as individual or collections of applications, firmware, or files, and can be scheduled on a recurring basis or a specific date & time. Use device selection criteria such as, device manufacturer, model, OS, location or group, and others, to control the distribution of software to selected devices.

Profile Based Configuration - Define all key network and wireless security parameters to ensure that your mobile devices are properly configured to access the network. Parameters include SSID, WEP, EAP, LEAP and TCP/IP settings.

Wireless Security Configuration (802.1X, WPA) - Define and deploy new security policies centrally—without having to physically touch mobile devices—through the integrated capabilities of Wavelink Avalanche and Funk Software. Save time by enabling centralized deployment of WPA supplicant software and WPA-based user access and encryption policies, with support for a broad range of EAP types: EAP-PEAP, EAP-MD5, LEAP, EAP-TLS and EAP-TTLS.

Bandwidth Management - Avalanche can schedule updates to avoid peak periods of network activity and allows you to specify the maximum number of devices to be updated simultaneously to prevent management traffic from clogging the network.

Software Updates - The Avalanche console makes it easy to define software package and configuration installation policies.

Checkpoint / Restart - Eliminate unnecessary traffic while performing software updates. Avalanche only downloads the components that have changed on the device. Also, in case a transfer is interrupted, the next time the device connects, only the remaining files will be downloaded.

Device GUI Lockdown - To minimize support costs, the administrator can control what applications the user has access to on the mobile device. Avalanche allows you to hide the Start Menu on Windows CE devices and define a list of applications which the user can access.

Text Messaging - Send text messages to specific mobile devices for instant communication with end-users.

Product Benefits

Cut Costs and Boost Productivity - Many aspects of Avalanche reduce the administrative effort required to manage and support your mobile devices. Other functions help boost mobile-user productivity by enhancing network reliability. This table (left) summarizes the essential features, capabilities and benefits.

Accommodate Present and Future Devices - With Avalanche, you can handle today's mobile devices while leaving room for growth and incorporating the ability to respond quickly to unexpected changes. We support a wide range of leading and legacy mobile devices, laptops, printers and operating systems: Symbol, Fujitsu, Intermec, LXE, HHP, DENSO, HP/Compaq, PSC; Windows, Windows Pocket PC, Windows CE, PalmOS and DOS. For the most up-to-date list of supported products and system requirements please go to www.wavelink.com/wavelink/avalanche

Avalanche Plug-ins

Remote Control - Wavelink Remote Control provides real-time screen view and control of your device directly from your PC.

CE Secure - Wavelink Avalanche CE Secure is a plug-in to Wavelink Avalanche that provides advanced user authentication and security on Windows CE™ mobile devices.

System Requirements

Administrative Console

Pentium III, 550 MHz
256 MB RAM
(512 MB RAM recommended)
200 MB Disk Space
Windows 2000 SP2 or greater
Windows XP

Deployed Services (Agents)

Pentium III, 550 MHz
256 MB RAM
(512 MB RAM recommended)
200 MB Disk Space
Windows 2000 SP2 or greater
Windows XP

NOTE: Disk space requirements do not account for additional disk space required for specific applications and firmware that will be loaded on the mobile devices.



11335 NE 122nd Way, Suite 200 Kirkland, WA 98034 USA

Sales and Support: 1-888-697-WAVE (9283)

International: +1-425-823-0111 UK/EMEA: +44-870-351-8564

WWW.WAVELINK.COM